

Opbouw wastafel

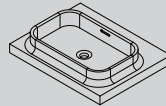
C7 Collectie



Omdenken

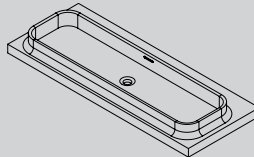
Hannes Wettstein († 2008) omschreef de collectie als volgt: *According to ceramic tradition, a wash basin is a bowl, a depression in a horizontal surface which catches water. Marike® turns this construction principle upside down and designs a basin which strives for one level. Paper thin wall surfaces rise like a thin membrane from horizontal plane and carry the water up with them. Plateau and wash basin merge completely with one another. The elegant vessel construction with curved walls on both sides would almost seem to defy rationality. It is based on a careful observation and great respect of the element water and follows a principle of ecological sustainability in the sensitive way it deals with this valuable resource.*

BESTELCODE AVP €*



MAC7600

1.191



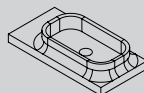
MAC71200

1.491

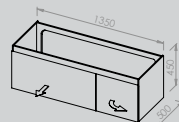
*Advies verkoopprijs excl. BTW

**Informeer voor de actuele voorraad status bij onze verkoop binnendienst.

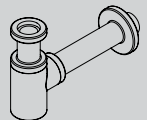
C7 Fontein
vanaf pagina 999



Kastenprogramma
vanaf pagina 999



Bijpassende sifon
vanaf pagina 999





ALGEMENE GEGEVENS

TYPE: Vrijhangende / opbouw wastafel

MATERIAAL: Xilito®

KLEUR: Wit

LEVERTIJD: Voorraad product**

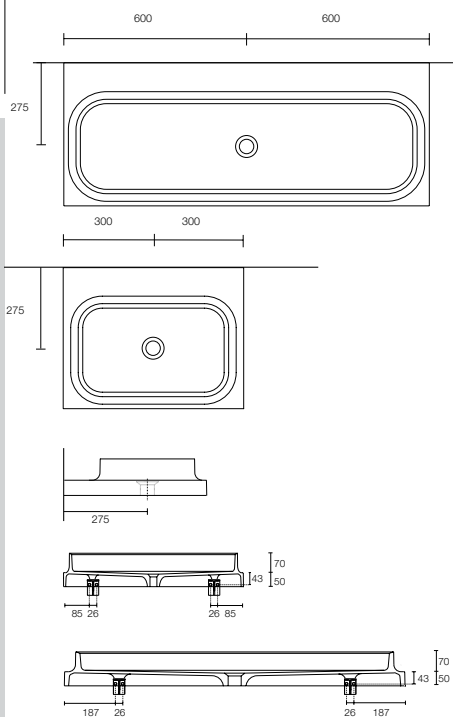
2D & 3D-FILES: Online beschikbaar

KRAANGAT: Zelf door te boren (standaard geen)

OVERLOOP (EN 14688:2015): CL20

DESIGN: Boudewijn Roest, Marike Andeweg

DESIGN DATUM: 2007



L x B x H (in mm)

GEWICHT

600 x 470 x 120

18KG / 40LBS

1200 x 470 x 120

25KG / 55LBS

Bijpassende plug
vanaf pagina 999

